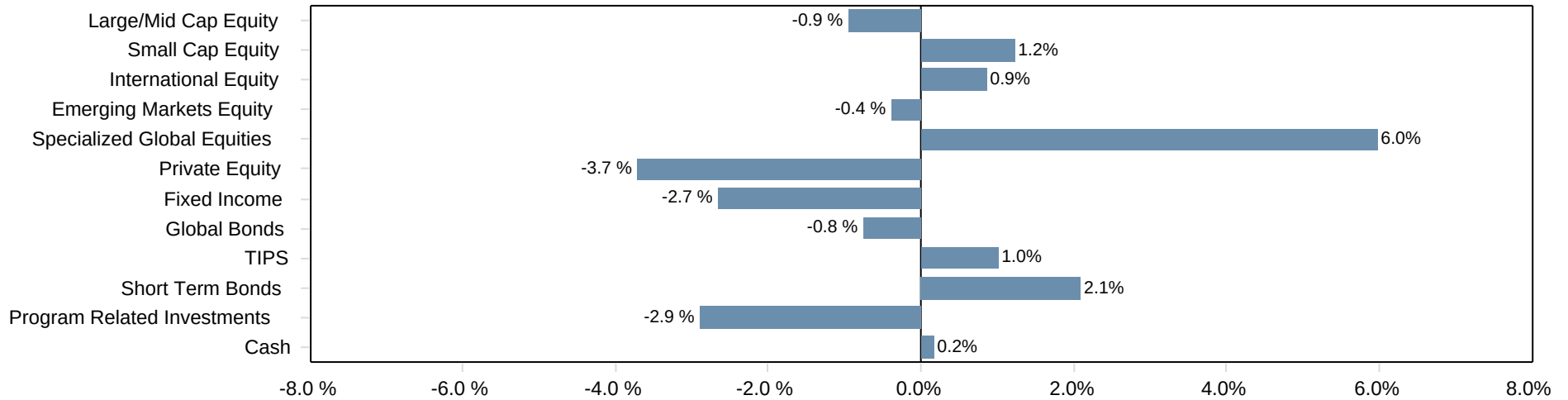


Asset Pool

Asset Allocation Compliance

Allocation Differences



Compliance Detail

	Asset Allocation \$	Asset Allocation (%)	Minimum Allocation (%)	Maximum Allocation (%)	Target Allocation (%)	Differences (%)
<b>Total Managed Assets</b>	<b>211,952,449</b>	<b>100.0</b>			<b>100.0</b>	<b>0.0</b>
Large/Mid Cap Equity	48,859,085	23.1	21.0	27.0	24.0	-0.9
Small Cap Equity	17,462,718	8.2	4.0	10.0	7.0	1.2
International Equity	42,117,916	19.9	16.0	22.0	19.0	0.9
Emerging Markets Equity	11,894,315	5.6	3.0	9.0	6.0	-0.4
Specialized Global Equities	46,592,707	22.0	11.0	23.0	16.0	6.0
Private Equity	2,735,204	1.3	0.0	10.0	5.0	-3.7
Fixed Income	15,563,966	7.3	6.0	14.0	10.0	-2.7
Global Bonds	6,867,311	3.2	1.0	8.0	4.0	-0.8
TIPS	8,504,966	4.0	1.0	7.0	3.0	1.0
Short Term Bonds	10,807,229	5.1	1.0	7.0	3.0	2.1
Program Related Investments	202,941	0.1	0.0	6.0	3.0	-2.9
Cash	344,091	0.2	0.0	0.0	0.0	0.2

Asset Pool

Asset Allocation & Performance

	Assets Market Value	% of Total Fund	Target (%)	Annualized Periods Ending - February 28, 2026										Inception Date
				1 mon %	3 mon %	CYTD %	1 yr %	3 yr %	5 yr %	7 yr %	10 yr %	15 yr %	SI %	
<b>Total Managed Assets</b>	<b>211,952,449</b>	<b>100.0</b>	<b>100.0</b>	<b>1.7</b>	<b>5.6</b>	<b>3.7</b>	<b>19.3</b>	<b>13.9</b>	<b>7.4</b>	<b>8.5</b>	<b>9.0</b>	<b>7.5</b>	<b>8.2</b>	<b>Jun 1995</b>
<i>70% MSCI ACWI / 30% Blmbg US Agg</i>				1.4	4.2	3.5	18.6	15.9	8.3	9.8	9.8	7.8	7.3	
<i>60% MSCI ACWI / 40% Blmbg US Agg</i>				1.4	3.9	3.3	16.8	14.3	7.2	8.8	8.7	7.1	6.9	
<i>Target Benchmark</i>				1.5	5.3	4.4	20.9	16.2	8.7	9.9	9.9	7.8	7.7	
<i>CPI + 5.0%</i>				0.7	1.9	1.2	7.4	7.8	9.5	8.8	8.3	7.6	7.5	
<b>Total Managed Assets with Crewcial OCIO</b>	<b>211,952,449</b>	<b>100.0</b>	<b>100.0</b>	<b>1.7</b>	<b>5.6</b>	<b>3.7</b>	<b>19.3</b>						<b>18.4</b>	<b>Jan 2025</b>
<i>70% MSCI ACWI / 30% Blmbg US Agg</i>				1.4	4.2	3.5	18.6	15.9	8.3	9.8	9.8	7.8	18.5	
<i>60% MSCI ACWI / 40% Blmbg US Agg</i>				1.4	3.9	3.3	16.8	14.3	7.2	8.8	8.7	7.1	16.9	
<i>Target Benchmark</i>				1.5	5.3	4.4	20.9	16.2	8.7	9.9	9.9	7.8	20.4	
<i>CPI + 5.0%</i>				0.7	1.9	1.2	7.4	7.8	9.5	8.8	8.3	7.6	7.7	
<b>Large/Mid Cap Equity</b>	<b>48,859,085</b>	<b>23.1</b>	<b>24.0</b>	<b>0.1</b>	<b>2.5</b>	<b>1.7</b>	<b>11.6</b>	<b>16.0</b>	<b>9.0</b>	<b>11.7</b>	<b>12.6</b>	<b>11.3</b>	<b>10.3</b>	<b>Feb 1996</b>
<i>S&amp;P 500 Index</i>				-0.8	0.7	0.7	17.0	21.8	14.2	15.6	15.5	13.7	10.2	
<b>Eagle Capital Management</b>	<b>11,419,926</b>	<b>5.4</b>		<b>-1.0</b>	<b>0.9</b>	<b>-1.4</b>	<b>11.4</b>	<b>22.4</b>	<b>12.1</b>	<b>14.2</b>	<b>14.8</b>	<b>13.2</b>	<b>11.1</b>	<b>Feb 2004</b>
<i>Russell 1000 Value Index</i>				2.6	8.0	7.3	18.4	16.0	11.8	11.5	11.9	10.9	8.8	
<b>Vanguard Inst Index Fund</b>	<b>4,927,309</b>	<b>2.3</b>		<b>-0.8</b>	<b>0.7</b>	<b>0.7</b>	<b>16.9</b>	<b>21.8</b>	<b>14.1</b>	<b>15.6</b>			<b>15.2</b>	<b>Dec 2018</b>
<i>S&amp;P 500 Index</i>				-0.8	0.7	0.7	17.0	21.8	14.2	15.6	15.5	13.7	15.2	
<b>Vanguard Large Cap Index ETF</b>	<b>1,615,460</b>	<b>0.8</b>		<b>-1.0</b>	<b>0.1</b>	<b>0.1</b>	<b>16.5</b>	<b>21.9</b>	<b>13.6</b>	<b>15.5</b>	<b>15.4</b>	<b>13.5</b>	<b>14.1</b>	<b>Nov 2008</b>
<i>S&amp;P 500 Index</i>				-0.8	0.7	0.7	17.0	21.8	14.2	15.6	15.5	13.7	14.1	
<b>American Funds Fundamental Investors A</b>	<b>2,501,619</b>	<b>1.2</b>		<b>0.3</b>	<b>4.5</b>	<b>4.2</b>	<b>27.1</b>	<b>24.6</b>	<b>14.7</b>	<b>15.3</b>	<b>15.2</b>	<b>12.9</b>	<b>9.3</b>	<b>Apr 2000</b>
<i>Russell 1000 Value Index</i>				2.6	8.0	7.3	18.4	16.0	11.8	11.5	11.9	10.9	8.0	
<b>Focused Investors Fund LP</b>	<b>17,734,967</b>	<b>8.4</b>		<b>0.9</b>	<b>6.7</b>	<b>4.2</b>	<b>6.3</b>	<b>10.6</b>	<b>11.0</b>	<b>12.4</b>	<b>12.5</b>	<b>11.8</b>	<b>11.7</b>	<b>Feb 2011</b>
<i>Russell 1000 Value Index</i>				2.6	8.0	7.3	18.4	16.0	11.8	11.5	11.9	10.9	11.1	
<b>Bares Capital Management</b>	<b>732</b>													
<i>Russell 1000 Index</i>				-0.5	0.8	0.8	16.7	21.4	13.3	15.3	15.3	13.5	11.7	
<b>American Funds Growth Fund of America A</b>	<b>1,327,098</b>	<b>0.6</b>		<b>-2.3</b>	<b>-1.6</b>	<b>-1.7</b>	<b>16.4</b>	<b>24.5</b>	<b>11.1</b>	<b>15.3</b>	<b>16.0</b>	<b>13.6</b>	<b>8.5</b>	<b>Apr 2000</b>
<i>Russell 1000 Growth Index</i>				-3.4	-5.4	-4.8	14.8	26.1	14.4	18.3	18.2	15.7	7.7	
<b>Artisan Mid Cap Instl.</b>	<b>9,331,974</b>	<b>4.4</b>		<b>0.9</b>	<b>-1.5</b>	<b>1.4</b>	<b>14.9</b>	<b>13.9</b>	<b>2.2</b>	<b>11.0</b>	<b>12.7</b>		<b>10.8</b>	<b>May 2011</b>
<i>Russell Midcap Growth Index</i>				0.8	-1.4	-0.1	8.2	15.7	6.3	11.5	13.2	11.7	11.5	

Asset Pool

Asset Allocation & Performance

	Assets Market Value	% of Total Fund	Target (%)	Annualized Periods Ending - February 28, 2026										Inception Date
				1 mon %	3 mon %	CYTD %	1 yr %	3 yr %	5 yr %	7 yr %	10 yr %	15 yr %	SI %	
<b>Small Cap Equity</b>	17,462,718	8.2	7.0	0.5	1.4	0.9	19.1	10.5	5.9	9.2	11.7	10.2	11.1	May 1995
<i>Russell 2000 Index</i>				0.8	5.6	6.2	23.3	13.1	5.0	9.1	11.3	9.5	9.2	
Champlain Small Cap	4,927,258	2.3		0.3	0.3	1.3	-4.0	5.1	1.1	6.0	10.5	9.3	8.9	Sep 2008
<i>Russell 2000 Index</i>				0.8	5.6	6.2	23.3	13.1	5.0	9.1	11.3	9.5	9.0	
DFA Targeted Value	5,195,126	2.5		2.9	11.1	9.6	22.0	13.2	12.1	12.2	12.4	10.4	11.0	Aug 2000
<i>Russell 2000 Value Index</i>				1.9	9.1	8.9	24.9	12.4	7.7	9.2	10.9	9.0	9.3	
American Funds Small Cap	1,037,607	0.5		4.2	8.0	7.9	25.7	11.7	2.1	9.0	10.8	8.8	6.0	Apr 2000
<i>Russell 2000 Growth Index</i>				-0.2	2.4	3.7	21.9	13.8	2.3	8.5	11.3	9.8	5.9	
First Light Focus Feeder Fund, Ltd	6,302,727	3.0		-1.7	-5.4	-6.5	40.6						12.8	Apr 2024
<i>Russell Microcap Index-Health Care (RGS)</i>				2.3	4.5	2.4	70.0	19.7	-0.3	8.1			22.1	
<b>International Equity</b>	42,117,916	19.9	19.0	3.5	11.2	8.1	32.7	17.2	10.7	9.7	9.9	7.5	8.4	May 1995
<i>MSCI EAFE (Net)</i>				4.6	13.4	10.1	34.6	18.8	10.8	10.7	10.3	6.9	6.0	
Silchester International	23,470,124	11.1		5.2	16.4	11.7	40.2	18.2	11.7	10.1	10.0	8.3	9.8	Jan 1998
<i>MSCI EAFE (Net)</i>				4.6	13.4	10.1	34.6	18.8	10.8	10.7	10.3	6.9	6.1	
Wellington International Contrarian Value	11,848,629	5.6		5.4	15.6	12.0	48.1	22.7	16.4	13.0	12.7		11.6	Oct 2015
<i>MSCI EAFE Value Index (Net)</i>				5.9	16.6	12.0	46.1	23.5	15.1	11.8	11.1	6.9	9.8	
Vanguard Developed Markets Adm	1,336,796	0.6		6.3	16.2	12.6	42.2	20.7	11.5	11.5	11.0		8.9	Jan 2015
<i>MSCI EAFE (Net)</i>				4.6	13.4	10.1	34.6	18.8	10.8	10.7	10.3	6.9	8.1	
Brown Capital Mgmt Intl Sm	5,462,368	2.6		-7.1	-13.5	-11.8	-12.9	3.1					-6.0	Jan 2022
<i>MSCI EAFE Small Cap (Net)</i>				4.8	13.4	10.9	41.7	17.0	7.3	9.2	9.5	7.6	7.0	
<b>Emerging Markets Equity</b>	11,894,315	5.6	6.0	2.4	14.5	10.2	34.4	12.3	2.3	4.3	6.7	3.5	4.9	Nov 2009
<i>MSCI Emerging Markets (Net)</i>				5.5	18.3	14.8	50.0	21.5	6.3	8.9	10.7	5.0	6.0	
Elephant Long Only EM Mkts	4,743,343	2.2		-0.8	-1.4	-2.4	0.3	-6.6					-10.4	Jan 2022
<i>MSCI Emerging Markets (Net)</i>				5.5	18.3	14.8	50.0	21.5	6.3	8.9	10.7	5.0	9.3	
Polunin Developing Countries Fund, LLC	7,150,971	3.4		4.7	27.8	20.5							43.0	Aug 2025
<i>MSCI Emerging Markets (Net)</i>				5.5	18.3	14.8	50.0	21.5	6.3	8.9	10.7	5.0	30.5	

Asset Pool

Asset Allocation & Performance

	Assets Market Value	% of Total Fund	Target (%)	Annualized Periods Ending - February 28, 2026										SI %	Inception Date	
				1 mon %	3 mon %	CYTD %	1 yr %	3 yr %	5 yr %	7 yr %	10 yr %	15 yr %				
Specialized Global Equities	46,592,707	22.0	16.0	2.8	7.8	3.8	27.0	19.8	11.3						13.3	Sep 2020
<i>MSCI AC World Index (Net)</i>				1.3	5.4	4.3	24.2	20.7	11.7	13.0	13.0	9.8	13.1			
Hengistbury Fund Limited Class B	4,345,186	2.1		2.0	7.4	5.2	28.7	28.7	17.1	10.7				9.7	Oct 2017	
<i>HFRI Hedged Equity</i>				1.5	5.5	4.0	20.8	13.9	7.5	9.6	9.1	6.4	8.3			
Manager B	2,770,562	1.3		2.1	-3.7	1.2	-6.5	3.9	4.6					5.4	Dec 2019	
<i>HFRI Fund of Funds</i>				1.1	4.2	3.0	12.8	9.1	5.3	6.3	5.6	4.1	6.6			
Sustainable Capital Africa Alpha Fund	8,108,448	3.8		17.0	35.8	29.2	101.0	30.6	17.1					15.4	Jan 2020	
<i>S&amp;P Pan Africa ex-South Africa</i>				0.1	12.7	7.6	62.4	24.0	13.4	9.0	7.3	2.0	10.2			
Manager C	3,044,553	1.4		-2.4	-5.2	-1.5	12.6	15.6	1.2					3.8	Nov 2020	
<i>MSCI AC World Index (Net)</i>				1.3	5.4	4.3	24.2	20.7	11.7	13.0	13.0	9.8	14.8			
Manager E	8,568,387	4.0		7.2	10.3	9.2	49.4	24.7	18.1					19.4	Nov 2020	
<i>MSCI Japan in LC (Net)</i>				9.9	16.4	15.3	49.1	28.2	18.4	16.3	14.1	12.0	21.2			
Manager A	4,483,219	2.1		-1.8	-15.1	-12.4	-13.0	9.2	7.0					11.6	Nov 2020	
<i>Russell 3000 Index</i>				-0.5	1.0	1.1	17.0	20.9	12.8	14.9	15.1	13.2	15.9			
Barker Partnership	8,885,479	4.2		-3.1	16.1	-1.8	35.1	33.1						27.7	Jul 2022	
<i>MSCI AC World Index (Net)</i>				1.3	5.4	4.3	24.2	20.7	11.7	13.0	13.0	9.8	18.7			
Working Capital Partners (Offshore)	2,844,691	1.3		-5.4	-2.0	-5.3	11.7							0.2	Jan 2025	
<i>HFRI Equity Hedge (Total) Index</i>				1.5	5.5	4.0	20.8	13.9	7.5	9.6	9.1	6.4	18.3			
Private Equity	2,735,204	1.3	5.0	0.0	0.2	0.2	1.0	1.5	7.2	9.2	9.9	9.2	7.1	Aug 2010		
<i>S&amp;P 500 Index</i>				-0.8	0.7	0.7	17.0	21.8	14.2	15.6	15.5	13.7	14.6			

Asset Pool

Asset Allocation & Performance

	Assets Market Value	% of Total Fund	Target (%)	Annualized Periods Ending - February 28, 2026										SI %	Inception Date
				1 mon %	3 mon %	CYTD %	1 yr %	3 yr %	5 yr %	7 yr %	10 yr %	15 yr %			
<b>Fixed Income</b>	15,563,966	7.3	10.0	1.4	1.5	1.6	5.8	4.7	1.2	2.6	2.3	2.8	4.5	Feb 1996	
<i>Blmbg. U.S. Aggregate Index</i>				1.6	1.6	1.7	6.3	5.1	0.4	2.1	2.0	2.5	4.2		
<b>Income Research &amp; Management</b>	14,563,966	6.9		1.6	1.6	1.8	6.3	5.2	0.5	2.5	2.3		2.9	Apr 2011	
<i>Blmbg. U.S. Aggregate Index</i>				1.6	1.6	1.7	6.3	5.1	0.4	2.1	2.0	2.5	2.5		
<b>Investment in Holding Corporation</b>	1,000,000	0.5													
<i>Blmbg. Aggregate Index (CAD)</i>				1.6	1.6	1.7	6.3	5.1	0.4	2.1	2.0	2.5	2.1		
<b>Short Term Bonds</b>	10,807,229	5.1	3.0	0.8	1.2	0.9	5.5	5.2					4.9	Jan 2023	
<i>Blmbg. 1-3 Govt</i>				0.5	1.1	0.7	4.7	4.8	1.9	2.3	1.8	1.5	4.5		
<b>Vanguard Short Term Bond Index</b>	10,807,229	5.1		0.8	1.2	0.9	5.5	5.2	1.9	2.6	2.2		1.9	Jul 2012	
<i>Blmbg. 1-3 Govt</i>				0.5	1.1	0.7	4.7	4.8	1.9	2.3	1.8	1.5	1.5		
<b>Global Bonds</b>	6,867,311	3.2	4.0	1.1	2.7	2.5	10.4	3.8	-2.2	0.3	0.9	1.2	1.4	Nov 2009	
<i>FTSE World Government Bond Index</i>				1.3	2.3	2.2	7.9	4.0	-2.4	-0.1	0.3	0.5	0.6		
<b>Colchester Global Bond</b>	6,867,311	3.2		1.1	2.7	2.5	10.4	3.8	-2.2	0.3	0.9	1.2	1.4	Nov 2009	
<i>FTSE World Government Bond Index</i>				1.3	2.3	2.2	7.9	4.0	-2.4	-0.1	0.3	0.5	0.6		
<b>TIPS</b>	8,504,966	4.0	3.0	1.3	1.2	1.7	5.1	4.6	1.6	3.5	2.9	2.9	3.1	Nov 2009	
<i>Blmbg. U.S. TIPS</i>				1.3	1.2	1.6	5.1	4.6	1.7	3.5	3.0	2.9	3.2		
<b>Vanguard Inflation Protected Securities</b>	8,504,966	4.0		1.3	1.2	1.7	5.1	4.6	1.6	3.5	2.9	2.9	3.1	Nov 2009	
<i>Blmbg. U.S. TIPS</i>				1.3	1.2	1.6	5.1	4.6	1.7	3.5	3.0	2.9	3.2		
<b>Program Related Investments</b>	202,941	0.1	3.0												
<b>Bridge Loans</b>	202,941	0.1													
<i>90 Day U.S. Treasury Bill</i>				0.3	0.9	0.6	4.0	4.8	3.3	2.7	2.2	1.5	2.7		
<b>Cash</b>	344,091	0.2	0.0	0.3	0.6	0.4							3.2	May 2025	
<b>Cash - PNC</b>	344,091	0.2		0.3	0.8	0.6								May 2025	
<i>90 Day U.S. Treasury Bill</i>				0.3	0.9	0.6	4.0	4.8	3.3	2.7	2.2	1.5	3.3		

Asset Pool

Asset Allocation & Performance

	Assets Market Value	Annualized Periods Ending - February 28, 2026										Inception Date
		1 mon %	3 mon %	CYTD %	1 yr %	3 yr %	5 yr %	7 yr %	10 yr %	15 yr %	SI %	
<b>Outside Managed Investments</b>												
American Funds - Outside Managed Fund 1	166,224											
American Funds - Outside Managed Fund 2	116,499											
American Funds - Outside Managed Fund 3	565,738											
<b>Total American Funds</b>	<b>848,460</b>											
Northwestern Mutual - Outside Managed Fund 4	1,966,086											
<b>Total Northwestern Mutual</b>	<b>1,966,086</b>											
Baird - Outside Managed Fund 5	2,768,292											
Baird - ASF Czech - Outside Managed Fund 9	1,437,316											
Baird - ASF Czech Scholarship - Outside Managed Fund 10	1,535,786											
<b>Total Baird</b>	<b>5,741,394</b>											
Outside Managed Fund 6	2,127,271											
Outside Managed Fund 7	3,449,064											
Outside Managed Fund 12	2,416,472											
<b>Total</b>	<b>7,992,807</b>											
Charles Schwab - Outside Managed Fund 8	179,098											
<b>Total Charles Schwab</b>	<b>179,098</b>											
Merrill Lynch - Outside Managed Fund 11	4,253,423											
<b>Total Merrill Lynch</b>	<b>4,253,423</b>											
<b>Outside Managed Investments</b>	<b>20,981,268</b>											
Bank of Utica MM Option	1	0.0	0.0	0.0	0.0	0.0	0.1	0.3	0.4	0.4	0.4	Mar 2009
<i>90 Day U.S. Treasury Bill</i>		0.3	0.9	0.6	4.0	4.8	3.3	2.7	2.2	1.5	1.3	
Bank of Utica MM	1,763,442	0.0	0.0	0.0	0.0	0.0	0.0	0.0	0.0	0.0	0.0	Mar 2009
<i>90 Day U.S. Treasury Bill</i>		0.3	0.9	0.6	4.0	4.8	3.3	2.7	2.2	1.5	1.3	
Bank of Utica Checking	986,595	0.0	0.0	0.0	0.0	0.0	0.0	0.0	0.0	0.0	0.0	Mar 2009
<i>90 Day U.S. Treasury Bill</i>		0.3	0.9	0.6	4.0	4.8	3.3	2.7	2.2	1.5	1.3	
Vanguard Money Market Fund	--	0.0	0.0	0.0	1.8	4.0	2.9				2.3	Oct 2019
<i>90 Day U.S. Treasury Bill</i>		0.3	0.9	0.6	4.0	4.8	3.3	2.7	2.2	1.5	2.7	
Baird	26,158											
<i>90 Day U.S. Treasury Bill</i>		0.3	0.9	0.6	4.0	4.8	3.3	2.7	2.2	1.5	4.1	
<b>Cash Composite</b>	<b>2,776,195</b>											

Asset Pool

Asset Allocation & Performance

	Assets Market Value	Annualized Periods Ending - February 28, 2026										SI %	Inception Date
		1 mon %	3 mon %	CYTD %	1 yr %	3 yr %	5 yr %	7 yr %	10 yr %	15 yr %			
Segregated Annuity - Total Fund	4,269,060	1.6	4.0	3.5	15.9	12.9	6.5	7.9	7.9		6.9	Sep 2012	
<i>60% MSCI ACWI / 40% Blmbg US Agg</i>		1.4	3.9	3.3	16.8	14.3	7.2	8.8	8.7	7.1	7.6		
USCCB Pool - Total Fund	13,998,654	1.5	3.7	3.5	17.8	14.6	7.1				8.4	Jun 2019	
<i>60% MSCI ACWI / 40% Blmbg US Agg</i>		1.4	3.9	3.3	16.8	14.3	7.2	8.8	8.7	7.1	9.0		
Short Term Pool - Total Fund	438,863	0.8	1.2	0.9	5.5	5.2	1.8	2.5	2.1		2.0	Jun 2014	
<i>Blmbg. 1-3 Govt</i>		0.5	1.1	0.7	4.7	4.8	1.9	2.3	1.8	1.5	1.7		
Intermediate Pool - Total Fund	1,331,698	2.1	5.0	4.3	16.2	12.4					6.2	Apr 2021	
<i>50% MSCI ACWI / 50% Blmbg US Agg</i>		1.5	3.5	3.0	15.0	12.8	6.1	7.7	7.6	6.3	6.0		
Segregated Charitable - Total Fund	774,149	3.0	7.8	6.7	22.9	16.0					10.0	Mar 2022	
<i>50% MSCI ACWI / 50% Blmbg US Agg</i>		1.5	3.5	3.0	15.0	12.8	6.1	7.7	7.6	6.3	7.0		
Treasury Money Market - Total Fund	2,870,243	0.3	0.9	0.6	4.1						4.1	Feb 2025	
<i>90 Day U.S. Treasury Bill</i>		0.3	0.9	0.6	4.0	4.8	3.3	2.7	2.2	1.5	4.0		
<b>Total Managed Assets</b>	<b>211,952,449</b>												
<b>Grand Total of All Assets</b>	<b>259,392,580</b>												

Asset Pool

Private Equity Summary of Partnership

Partnerships	Capital Statement Date	Market Value	Capital Commitment	Remaining Commitment	Drawn Down	Distributed	IRR (%)	Commitment Date
<b>Private Equity</b>								
TIFF Private Equity 2010	12/2025	178,925	750,000	97,500	652,500	1,269,509	12.8	07/2010
TIFF Private Equity 2011	12/2025	325,249	1,000,000	40,000	960,000	1,158,208	8.1	07/2011
Shelter Growth Intl AAA CMBS Tactical Oppty Fund	02/2026	1,481,905	1,500,000	-	1,500,000	146,520	4.2	01/2024
Crewcial AH 2024 Fund	09/2025	486,347	838,000	390,899	447,101	-	11.0	10/2024
Camber Partners Fund II LP	12/2025	132,778	1,000,000	846,057	153,943	-	-27.1	05/2025
Crewcial AH 2026 Fund		130,000	1,000,000	870,000	130,917	-	-0.7	01/2026
Private Equity		2,735,204	6,088,000	2,244,456				

## Disclosures:

Investment advisory services are offered through Crewcial Partners, LLC, a Securities and Exchange Commission Registered Investment Advisor. Values are calculated as of the date of the report. We believe the sources of our information, which may come from third-party service providers, to be reliable; however, the accuracy and completeness of the information is not guaranteed. Data reflected within this report may reflect data held at various Custodians and Managers, and may not be covered under SIPC. Certain other reported entities may be SIPC members that provide coverage for assets held there. You should contact your financial representative, or the other entity, or refer to the other entity's statement, regarding SIPC coverage. Assets reflected on this report are not held at the Firm on your behalf, but at the Custodian.

Performance data quoted represents past performance and does not guarantee future results. The investment return and principal of an investment will fluctuate so that an investor's shares when redeemed may be worth more or less than original cost. The values represented in this report may not reflect the true original cost of your initial investment. Performance returns for time periods longer than 365 days have been annualized.

The figures do not represent potential market conditions but do reflect the deduction of Investment Management fees.

The fees for Crewcial Partners, LLC, are disclosed in the Form ADV Part 2A Disclosure Brochure.

## Footnotes:

- Target Benchmark as of 1/1/2025 - consists of 29.0% S&P 500 / 7.0% Russell 2000 / 19.0% MSCI EAFE / 6.0% MSCI Emerging Markets / 16.0% MSCI ACWI / 10% Bloomberg Barclays Aggregate / 4.0% FTSE World Government Bond / 3.0% Bloomberg Barclays US TIPS / 3.0% Bloomberg 1-3 Govt. / 3.0% Zero Return.  
Target Benchmark returns are not changed retroactively even when the Foundation adopts new asset class targets.
- Specialized Global Equities are comprised of higher long-term expected return equity strategies that may experience higher short-term volatility and greater differences than market benchmark.
- Bares Capital in liquidation, included in Large/Mid Cap Equity value
- Segregated Annuity Reserve Fund, Northwestern Mutual, Baird, Newtyn, Charles Schwab, American Funds and Cash Composite are not included in Total Managed Assets performance.
- Outside Managed Assets include: American Funds, Northwestern Mutual, Baird, Newtyn, Charles Schwab and Merrill Lynch.
- Cash Composite includes Checking Accounts, Money Markets and Other Cash.